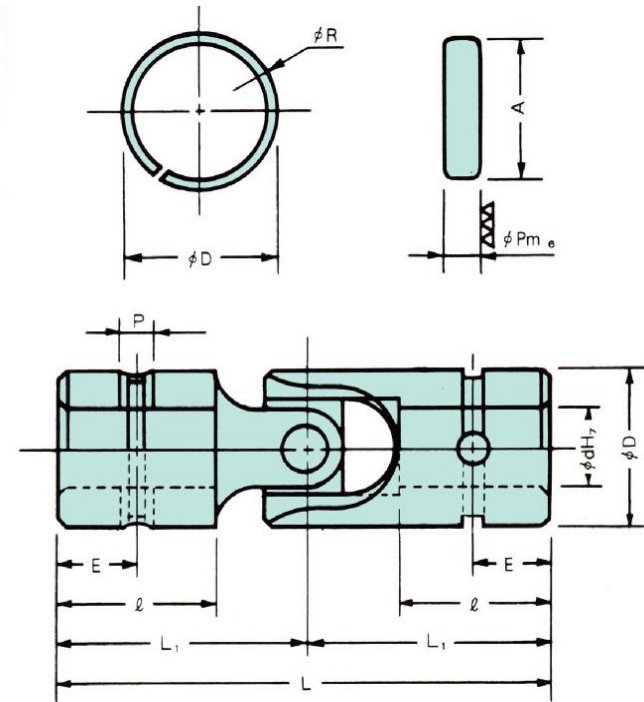


UNIVERSAL JOINT

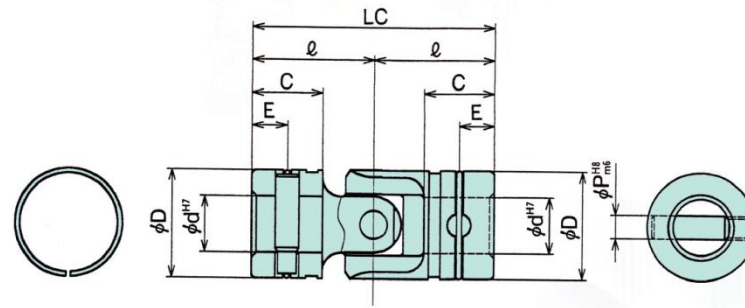
S TYPE



UNIT=m/m

MODEL	Ma (kgf-m)	M (kgf-m)	Angle(°)	ϕd^{H7}	ϕD	L	L_1	l	E	P	A	R	Center Swing	(g)
S-4	0.32	197	15	4	8	24	12.0	7	3	1.5	7	0.4	0.08	7
S-5	1.2	334	15	5	10	30	15.0	9	4	1.8	8.8	0.5	0.08	12
S-6	1.9	845	15	6	12	33	16.5	10	5	2.0	10.5	0.5	0.08	17

UNIVERSAL JOINT



SJ TYPE

UNIT=m/m												
MODEL	SPECIF	Ma (kgf-m)	M (kgf-m)	Angle(°)	Ød ^{H7}	ØD	LC	l	C	E	ØP ^{H8} _{m6}	M (g)
SJ-04	-	0.1	122.0	30	4	8	24	12.0	7.0	4.0	1.5	- 8
SJ-05	-	0.3	204.0	30	5	10	30	15.0	9.0	5.0	2.0	- 12
SJ-06	-	0.5	540.8	30	6	12	31	15.5	9.0	4.5	3.0	M3 15
SJ-08	-	1.2	799.5	30	8	15	36	18.0	10.0	5.0	3.5	M3 30
SJ-10	SJ-10KT	2.8	1325.6	30	10	19	42	21.0	12.0	6.0	4.5	M5 55
SJ-12	SJ-12KT	4.7	2345.3	30	12	23	52	26.0	15.0	7.5	5.0	M5 110
SJ-14	SJ-14KT	6.7	2651.3	30	14	26	59	29.5	17.0	8.5	5.8	M6 155
SJ-16	SJ-16KT	10.4	3976.9	30	16	30	74	37.0	22.0	11.0	6.5	M6 260
SJ-18	SJ-18KT	13.5	4486.8	30	18	33	81	40.5	23.5	11.75	7.0	M6 345
SJ-20	SJ-20KT	17.8	5302.5	30	20	36	87	43.5	25.0	12.5	8.0	M6 465
SJ-22	SJ-22KT	25.6	6934.1	30	22	40	94	47.0	27.0	13.5	9.0	M6 630
SJ-25	SJ-25KT	33.7	8259.7	30	25	44	105	52.5	30.0	15.0	10.0	M8 790
SJ-30	SJ-30KT	50.5	10197.2	30	30	51	122	61.0	35.0	17.5	11.5	M8 1160
SJ-35	SJ-35KT	80.8	14276.0	30	35	59	140	70.0	40.0	20.0	13.0	M10 2255
SJ-40	SJ-40KT	121.1	19354.9	30	40	67	157	78.5	45.0	22.5	14.5	M10 2730
SJ-45	SJ-45KT	161.5	22433.8	30	45	75	176	88.0	50.0	25.0	16.0	M10 4350
SJ-50	SJ-50KT	195.2	28552.1	30	50	83	191	95.5	55.0	27.5	17.5	M10 5200